

TOSHIBA CMOS DIGITAL INTEGRATED CIRCUIT SILICON MONOLITHIC

# TC7WH125FU, TC7WH125FK

## DUAL BUS BUFFER

The TC7WH125 is an advanced high speed CMOS DUAL BUS BUFFERS fabricated with silicon gate CMOS technology.

They achieve the high speed operation similar to equivalent Bipolar Schottky TTL while maintaining the CMOS low power dissipation.

The require 3-state control input  $\bar{G}$  to be set high to place the output into the impedance.

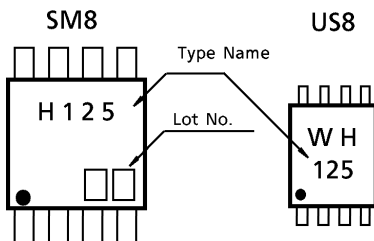
This device is designed to be used with 3-state memory address drivers, etc.

An input protection circuit ensures that 0 to 7V can be applied to the input pins without regard to the supply voltage. This device can be used to interface 5V to 3V system and two supply system such as battery back up. This circuit prevents device destruction due to mismatched supply and input voltages.

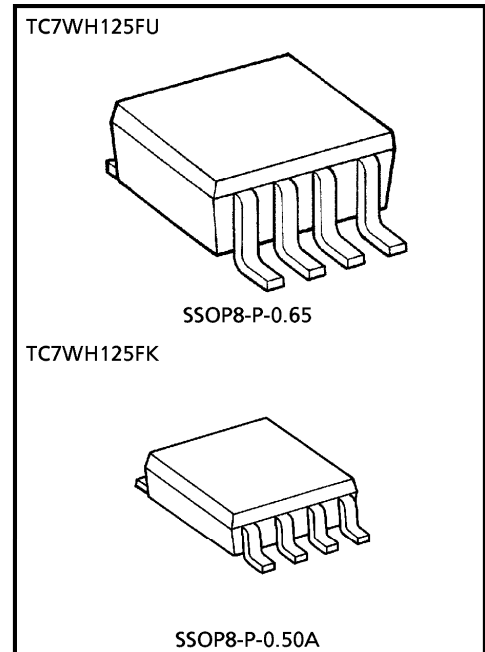
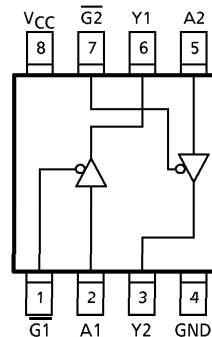
### FEATURES

- High Speed .....  $t_{pd} = 3.8ns$  (Typ.) at  $V_{CC} = 5V$
- Low Power Dissipation .....  $I_{CC} = 2\mu A$  (Max.) at  $T_a = 25^\circ C$
- High Noise Immunity .....  $V_{NIH} = V_{NIL} = 28\% V_{CC}$  (Min.)
- Power Down Protection is provided on all inputs.
- Balanced Propagation Delays .....  $t_{pLH} \approx t_{pHL}$
- Wide Operation Voltage Range ...  $V_{CC} (opr) = 2 \sim 5.5V$
- Low Noise .....  $V_{OLP} = 0.8V$  (Max.)

### MARKING



### PIN ASSIGNMENT (TOP VIEW)



Weight  
 SSOP8-P-0.65 : 0.02g (Typ.)  
 SSOP8-P-0.50A : 0.01g (Typ.)

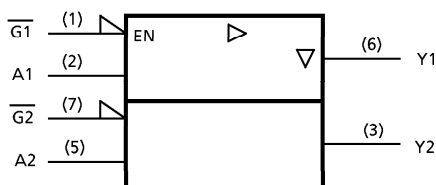
980508EBA2

● TOSHIBA is continually working to improve the quality and the reliability of its products. Nevertheless, semiconductor devices in general can malfunction or fail due to their inherent electrical sensitivity and vulnerability to physical stress. It is the responsibility of the buyer, when utilizing TOSHIBA products, to observe standards of safety, and to avoid situations in which a malfunction or failure of a TOSHIBA product could cause loss of human life, bodily injury or damage to property. In developing your designs, please ensure that TOSHIBA products are used within specified operating ranges as set forth in the most recent products specifications. Also, please keep in mind the precautions and conditions set forth in the TOSHIBA Semiconductor Reliability Handbook.

**MAXIMUM RATINGS** (Ta = 25°C)

| CHARACTERISTIC                      | SYMBOL           | RATING                      | UNIT |
|-------------------------------------|------------------|-----------------------------|------|
| Supply Voltage Range                | V <sub>CC</sub>  | - 0.5~7.0                   | V    |
| DC Input Voltage                    | V <sub>IN</sub>  | - 0.5~7.0                   | V    |
| DC Output Voltage                   | V <sub>OUT</sub> | - 0.5~V <sub>CC</sub> + 0.5 | V    |
| Input Diode Current                 | I <sub>IK</sub>  | - 20                        | mA   |
| Output Diode Current                | I <sub>OK</sub>  | ± 20                        | mA   |
| DC Output Current                   | I <sub>OUT</sub> | ± 25                        | mA   |
| DC V <sub>CC</sub> / Ground Current | I <sub>CC</sub>  | ± 50                        | mA   |
| Power Dissipation                   | P <sub>D</sub>   | 300 (SM8)                   | mW   |
|                                     |                  | 200 (US8)                   |      |
| Storage Temperature                 | T <sub>stg</sub> | - 65~150                    | °C   |
| Lead Temperature (10 s)             | T <sub>L</sub>   | 260                         | °C   |

**LOGIC DIAGRAM**



**TRUTH TABLE**

| INPUTS |   | OUTPUTS |
|--------|---|---------|
| G      | A | Y       |
| H      | x | Z       |
| L      | L | L       |
| L      | H | H       |

x : Don't Care  
Z : High Impedance

**RECOMMENDED OPERATING CONDITIONS**

| CHARACTERISTIC           | SYMBOL           | RATING                               | UNIT   |
|--------------------------|------------------|--------------------------------------|--------|
| Supply Voltage           | V <sub>CC</sub>  | 2~5.5                                | V      |
| Input Voltage            | V <sub>IN</sub>  | 0~5.5                                | V      |
| Output Voltage           | V <sub>OUT</sub> | 0~V <sub>CC</sub>                    | V      |
| Operating Temperature    | T <sub>opr</sub> | - 40~85                              | °C     |
| Input Rise and Fall Time | dt / dv          | 0~100 (V <sub>CC</sub> = 3.3 ± 0.3V) | ns / V |
|                          |                  | 0~20 (V <sub>CC</sub> = 5 ± 0.5V)    |        |

980508EBA2'

- The products described in this document are subject to foreign exchange and foreign trade laws.
- The information contained herein is presented only as a guide for the applications of our products. No responsibility is assumed by TOSHIBA CORPORATION for any infringements of intellectual property or other rights of the third parties which may result from its use. No license is granted by implication or otherwise under any intellectual property or other rights of TOSHIBA CORPORATION or others.
- The information contained herein is subject to change without notice.

## DC ELECTRICAL CHARACTERISTICS

| CHARACTERISTIC                   | SYMBOL          | TEST CONDITION  |      | V <sub>CC</sub><br>(V)   | Ta = 25°C             |      |                       | Ta = -40~85°C         |                       | UNIT |   |
|----------------------------------|-----------------|---|------|--------------------------|-----------------------|------|-----------------------|-----------------------|-----------------------|------|---|
|                                  |                 |   |      |                          | MIN.                  | TYP. | MAX.                  | MIN.                  | MAX.                  |      |   |
| High-Level Input Voltage         | V <sub>IH</sub> | —   |      | 2.0                      | 1.5                   | —    | —                     | 1.5                   | —                     | V    |   |
|                                  |                 |   |      | 3.0~5.5                  | V <sub>CC</sub> × 0.7 | —    | —                     | V <sub>CC</sub> × 0.7 | —                     |      |   |
| Low-Level Input Voltage          | V <sub>IL</sub> | —   |      | 2.0                      | —                     | —    | 0.5                   | —                     | 0.5                   | V    |   |
|                                  |                 |   |      | 3.0~5.5                  | —                     | —    | V <sub>CC</sub> × 0.3 | —                     | V <sub>CC</sub> × 0.3 |      |   |
| High-Level Output Voltage        | V <sub>OH</sub> | V <sub>IN</sub> = V <sub>IH</sub> or V <sub>IL</sub>  |      | I <sub>OH</sub> = -50 μA | 2.0                   | 1.9  | 2.0                   | —                     | 1.9                   | —    | V |
|                                  |                 |   |      |                          | 3.0                   | 2.9  | 3.0                   | —                     | 2.9                   | —    |   |
|                                  |                 |   |      | I <sub>OH</sub> = -4mA   | 4.5                   | 4.4  | 4.5                   | —                     | 4.4                   | —    |   |
|                                  |                 |   |      |                          | 4.5                   | 3.94 | —                     | —                     | 3.8                   | —    |   |
| Low-Level Output Voltage         | V <sub>OL</sub> | V <sub>IN</sub> = V <sub>IL</sub>   |      | I <sub>OL</sub> = 50 μA  | 2.0                   | —    | 0.0                   | 0.1                   | —                     | 0.1  | V |
|                                  |                 |   |      |                          | 3.0                   | —    | 0.0                   | 0.1                   | —                     | 0.1  |   |
|                                  |                 |   |      |                          | 4.5                   | —    | 0.0                   | 0.1                   | —                     | 0.1  |   |
|                                  |                 |   |      | I <sub>OL</sub> = 4mA    | 3.0                   | —    | —                     | 0.36                  | —                     | 0.44 |   |
| 4.5                              | —               | —   | 0.36 |                          | —                     | 0.44 |                       |                       |                       |      |   |
| 3-State Output Off-State Current | I <sub>OZ</sub> | V <sub>IN</sub> = V <sub>IH</sub> or V <sub>IL</sub><br>V <sub>OUT</sub> = V <sub>CC</sub> or GND |      | 5.5                      | —                     | —    | ±0.25                 | —                     | ±2.5                  | μA   |   |
| Input Leakage Current            | I <sub>IN</sub> | V <sub>IN</sub> = V <sub>CC</sub> or GND  |      | 0~5.5                    | —                     | —    | ±0.1                  | —                     | ±1.0                  | μA   |   |
| Quiescent Supply Current         | I <sub>CC</sub> | V <sub>IN</sub> = V <sub>CC</sub> or GND  |      | 5.5                      | —                     | —    | 2.0                   | —                     | 20.0                  | μA   |   |

**AC ELECTRICAL CHARACTERISTICS** (Input  $t_r = t_f = 3\text{ns}$ )

| CHARACTERISTIC                         | SYMBOL            | TEST CONDITION      |                     | Ta = 25°C |      |      | Ta = -40~85°C |      | UNIT |      |
|--|-------------------|---------------------|---------------------|-----------|------|------|---------------|------|------|------|
|  |                   | V <sub>CC</sub> (V) | C <sub>L</sub> (pF) | MIN.      | TYP. | MAX. | MIN.          | MAX. |      |      |
| Propagation Delay Time                 | t <sub>pLH</sub>  | 3.3 ± 0.3           | 15                  | —         | 5.6  | 8.0  | 1.0           | 9.5  | ns   |      |
|  |                   |                     | 50                  | —         | 8.1  | 11.5 | 1.0           | 13.0 |      |      |
|  | 5.0 ± 0.5         | 15                  | —                   | 3.8       | 5.5  | 1.0  | 6.5           |      |      |      |
|  |                   | 50                  | —                   | 5.3       | 7.5  | 1.0  | 8.5           |      |      |      |
| 3-State Output Enable Time             | t <sub>pZL</sub>  | 3.3 ± 0.3           | 15                  | —         | 5.4  | 8.0  | 1.0           | 9.5  | ns   |      |
|  |                   |                     | 50                  | —         | 7.9  | 11.5 | 1.0           | 13.0 |      |      |
|  | 5.0 ± 0.5         | 15                  | —                   | 3.6       | 5.1  | 1.0  | 6.0           |      |      |      |
|  |                   | 50                  | —                   | 5.1       | 7.1  | 1.0  | 8.0           |      |      |      |
| 3-State Output Disable Time            | t <sub>pLZ</sub>  | 3.3 ± 0.3           | 50                  | —         | 9.5  | 13.2 | 1.0           | 15.0 | ns   |      |
|  |                   |                     | 5.0 ± 0.5           | 50        | —    | 6.1  | 8.8           | 1.0  |      | 10.0 |
| Output to Output Skew                  | t <sub>osLH</sub> | (Note 1)            | 3.3 ± 0.3           | 50        | —    | —    | 1.5           | —    | 1.5  | ns   |
|  |                   |                     | 5.0 ± 0.5           | 50        | —    | —    | 1.0           | —    | 1.0  |      |
| Input Capacitance                      | C <sub>IN</sub>   |                     |                     | —         | 4    | 10   | —             | 10   | pF   |      |
| Output Capacitance                     | C <sub>OUT</sub>  |                     |                     | —         | 6    | —    | —             | —    | pF   |      |
| Power Dissipation Capacitance (Note 2) | C <sub>PD</sub>   |                     |                     | —         | 14   | —    | —             | —    | pF   |      |

(Note 1) : Parameter guaranteed by design.  $t_{osLH} = |t_{pLHm} - t_{pLHn}|$ ,  $t_{osHL} = |t_{pHLm} - t_{pHLn}|$

(Note 2) : C<sub>PD</sub> is defined as the value of the internal equivalent capacitance which is calculated from the operating current consumption without load.

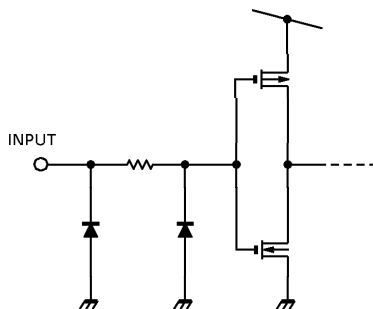
Average operating current can be obtained by the equation :

$$I_{CC}(\text{opr}) = C_{PD} \cdot V_{CC} \cdot f_{IN} + I_{CC} / 2 \text{ (per bit)}$$

**NOISE CHARACTERISTICS** ( $T_a = 25^\circ\text{C}$ , Input  $t_r = t_f = 3\text{ns}$ )

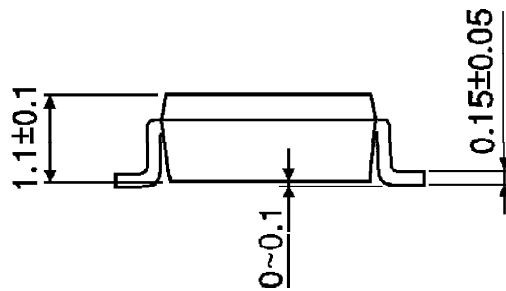
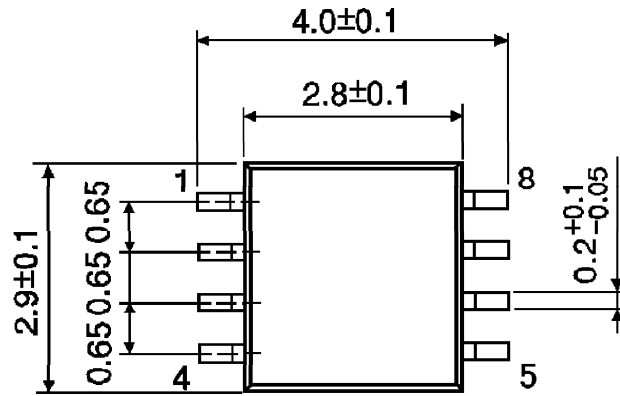
| CHARACTERISTIC                              | SYMBOL    | TEST CONDITION      | $V_{CC}$ (V) | TYP. | LIMIT | UNIT |
|---|-----------|---------------------|--------------|------|-------|------|
|   |           |                     | 5.0          |      |       |      |
| Quiet Output<br>Maximum Dynamic $V_{OL}$    | $V_{OLP}$ | $C_L = 50\text{pF}$ | 5.0          | 0.3  | 0.8   | V    |
| Quiet Output<br>Minimum Dynamic $V_{OL}$    | $V_{OLV}$ | $C_L = 50\text{pF}$ | 5.0          | -0.3 | -0.8  | V    |
| Minimum High Level<br>Dynamic Input Voltage | $V_{IHD}$ | $C_L = 50\text{pF}$ | 5.0          | —    | 3.5   | V    |
| Maximum Low Level<br>Dynamic Input Voltage  | $V_{ILD}$ | $C_L = 50\text{pF}$ | 5.0          | —    | 1.5   | V    |

**INPUT EQUIVALENT CIRCUIT**



OUTLINE DRAWING  
SSOP8-P-0.65

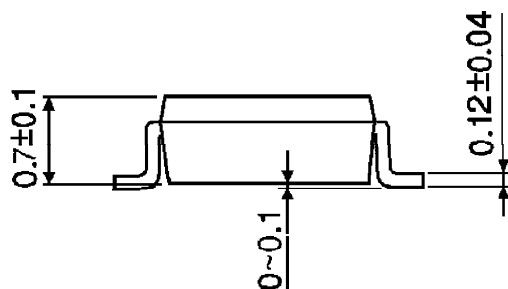
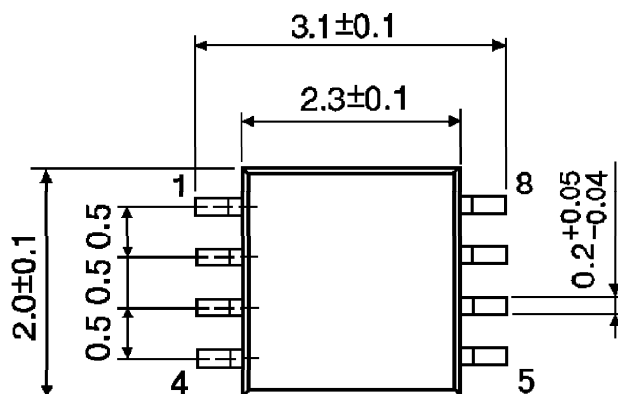
Unit : mm



Weight : 0.02g (Typ.)

OUTLINE DRAWING  
SSOP8-P-0.50A

Unit : mm



Weight : 0.01g (Typ.)